

FleXApp 1003

Powerful online 1003 that works with any site

Interactive, intuitive loan app

- The easiest and fastest way for your borrowers to apply online
- User friendly interface presents only relevant sections to borrowers
- Automatically saves so borrowers can return later to finish when they have all their financial information together
- Pop-up help screens give borrowers field by field assistance right when they need it
- Click-through credit authorizations included for free
- Available in five languages: English, Spanish, French, German, and Portuguese
- FleXApp 1003 integrates with any LOS that supports the Fannie Mae DO/ DU 3.2 format including seamless integrations with BytePro®, Calyx Point® (via the XSites Desktop), and Mortgage Dashboard®

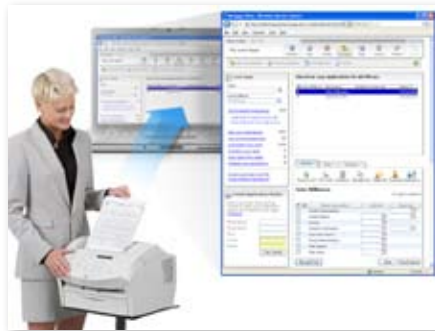


LOS integration tools eliminate retyping, errors, and saves time

Paperless made easy with DirectFax™

- DirectFax technology gathers pay check stubs, tax returns and other paper docs and converts them into a PDF and attaches it to your loan file
- Turns any fax machine into a scanner using the supplied bar-coded cover page and toll free number provided by a la mode

- DirectFax can capture paper loan applications and convert them to PDFs for borrowers who don't fill out an app online and where you want an electronic version



DirectFax turns fax machines into scanners to convert paper docs to electronic ones and transmitting them to the proper loan file on your computer

- Send e-mail status updates automatically to clients, real estate agents, title companies, and anyone else every time a change is made to the loan file

Security, GLB & Patriot Act Compliance

- Loan apps submitted by borrowers using the FlexApp 1003 are protected by a 128bit SSL connection on the page that loads the loan app program
- Electronic access to documents is restricted to key personnel who develop and maintain the secure server environment
- Monitored firewalls act as a barrier between the Internet and our secure server environment and prevent unauthorized access to any of our secure servers from outside the building.
- Physical access to the data is protected in our network operations center by multiple layers of security – including armed guards. Physical access from outside the building to the general offices is secured by electronic card access and monitored by video surveillance

- Anyone without a security badge is not even able to enter the general offices. Once inside the general offices, access to the network center itself is again limited by card access to key personnel who maintain the systems. Logs are kept of all access to any door
- Under no circumstances does a la mode, sell, convey, share or disseminate in any way, any data associated with your clients' loan applications
- For BytePro integrations an encrypted SSL connection from BytePro desktop software is made directly to our servers
- For LOS systems that utilize the Fannie Mae DO/DU 3.2 format the DO/DU file is downloaded from the a la mode servers to your local computer over a secure HTTPS connection
- Our data center is located in Oklahoma City, Oklahoma. In addition, we have an office and data center in Salt Lake City, Utah. Each center houses at least one redundant system and boasts redundant power employing uninterruptible power supplies and generators capable of supplying them with power for an indefinite period of time. In the event of a disaster affecting the physical location of the Oklahoma City data center, we are capable of becoming fully functional by employing our alternate center.

Support, service, and training

- 24 x 7 x 365 live tech support based in Oklahoma City, Oklahoma
- Pre-recorded webinars so you can watch and learn at your convenience
- Live, interactive webinars allow for hands on help and real time Q&A
- Short, topical tips and tricks are always updated at alamode.com